

# Publishing a blog post in IBP Communities

[This help page is also available online.](#)

ABOUT US BREEDING TOOLS BREEDING SERVICES COMMUNITIES & SUPPORT

COMMUNITIES

Photo Credit: Ramen, Alpacita

Development Mode: EDITING (Switch)

Page Options Version Diff Revision History Batch Upload Publish Translate Save draft

Jump to a Community

Crop Home Digest Blog Forums Projects Variety Releases Publications Members Add - Write a post

Notification Preferences

### Blog

#### Citing the Breeding Management System

Posted on June 26, 2014 by Valerie Boire

For citing the Breeding Management System in your publications, please use the following entry: "The Integrated Breeding Platform's Breeding Management System Version 2.1, May 12, 2014.&n... Read More

#### BMS Version 2.1 Release

Posted on May 14, 2014 by Fred Okono

An intermediate release of the Breeding Management System (BMS) is now available on the IBP portal (download BMS V2.1). This new release brings improvements to usability as well as some refinemen... Read More

#### Nominate a scientist for the Borlaug Field Award

Posted on April 3, 2014 by Theresa Fulton

System Requirements recommended for optimal experience Windows XP SP3 or newer 4GB RAM 1Ghz Dual-core Processor 250GB Hard Drive

Resource Library

Crop Information & Genomics

Publications

GCP Archives

Product Catalogue

Communities of Interest

Crop-specific communities

Technical user communities

Request a new community

Support Channels

Helpline & Chat

FAQs

Sign in to your Community and click Add/Write a post

If you do not have an account, please refer to the [Registration help page](#).

To join a Community, [refer to this help page](#).

ABOUT US BREEDING TOOLS BREEDING SERVICES COMMUNITIES & SUPPORT

Page Options Version Diff Revision History Batch Upload Publish Translate Save draft

Jump to a Community

Members Add -

### Blog

Post Title

Post Content

Back to Top

System Requirements recommended for optimal experience Windows XP SP3 or newer 4GB RAM 1Ghz Dual-core Processor 250GB Hard Drive

Resource Library

Crop Information & Genomics

Publications

GCP Archives

Product Catalogue

Communities of Interest

Crop-specific communities

Technical user communities

Request a new community

Support Channels

Helpline & Chat

FAQs

Get local support

The Integrated Breeding Platform (IBP) is hosted on the iPlant Collaborative. You will need to [register](#) for an iPlant account to benefit from the full range of IBP resources: [here's why](#).

Plant Collaborative

Give your post a title

# Publishing a blog post in IBP Communities

Development Mode: EDITING (w/lock)

Page Options Version Diff Revision History Batch Upload Publish Translate Save draft

**Cowpea** Jump to a Community

Members Add

**A panorama of our first week at IB-MYC**

Post Content

Back to Top

Write or paste your text in the content area. To add a picture, click on the picture icon in the editing menu

Image Properties

Image Info Link Upload Advanced

URL Upload Browse Server

Alternative Text

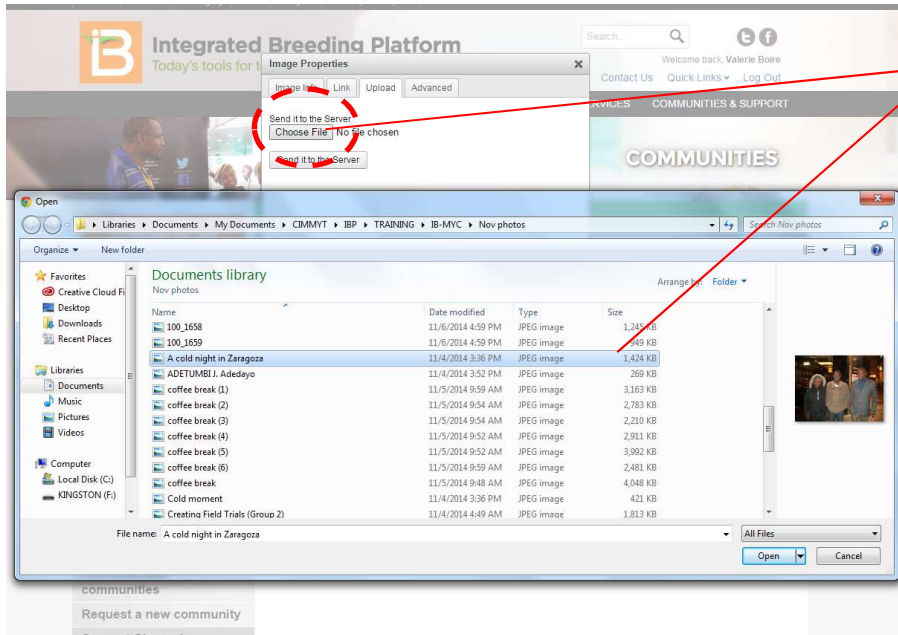
Width Height Border HSpace VSpace Alignment

Preview: Lorem ipsum dolor sit amet consectetur adipiscing elit. Maecenas feugiat consequat diam. Maecenas metus. Vivamus diam purus, cursus a, commodo non, facies vitae, nulla. Aenean dictum lacus tortor. Nunc iaculis, nibh non iaculis aliquam, orci felis euismod neque, sed ornare massa mauns sed velit. Nulla pretium mi et ius. Fusce mi pede tempor id, cursus ac, ullamcorper nec, enim. Sed tortor. Curabitur molestie. Duis velit augue, condimentum at, ultrices a, iaculis ut, orci. Donec pellentesque egestas eros. Integer cursus, augue in cursus faucibus, eros pede bibendum sem, in tempus tellus justo quis ligula. Etiam eget tortor.

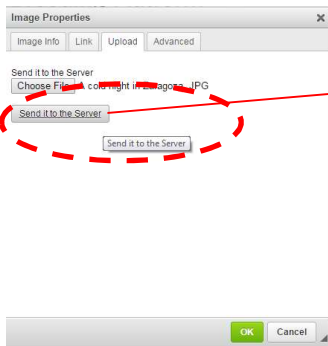
OK Cancel

This dialog box will open. Choose the 'Upload' tab.

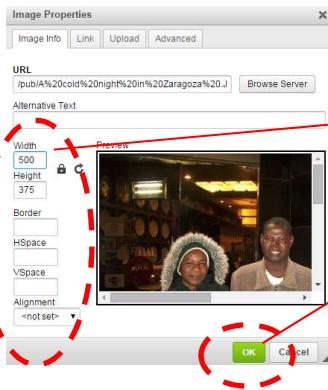
# Publishing a blog post in IBP Communities



Click on 'Choose File' and select an image from your computer.



Click on 'send to the server'.  
Once this is done, you will automatically be brought back to the first tab 'Image info'.



Adjust the image properties if you wish (size, alignment, etc.)  
If you change the size, **make sure that the lock and key icon is closed** (click on it to open and close) in order to respect the photo's proportions during adjustments; if not, it will look distorted.  
'Alignment' let's you decide if the picture should appear on the left or the right of the page.  
Once you are satisfied will all the parameters, click 'OK'

# Publishing a blog post in IBP Communities

The screenshot shows the 'EDITING' mode of the IBP Communities interface. At the top, there are navigation tabs: ABOUT US, BREEDING TOOLS, BREEDING SERVICES, and COMMUNITIES & SUPPORT. Below these is a green bar with 'Development Mode: EDITING (Switch)' and a search icon. A toolbar contains buttons for Page Options, Version Diff, Revision History, Batch Upload, Publish, Translate, and Save draft. The main content area is titled 'Cowpea' and has a 'Jump to a Community' dropdown. Below the title are navigation links: Crop Home, Digest, Blog, Forums, Projects, Variety Releases, Publications, Members, and Add. A 'Notification Preferences' link is also present. The main text area contains the title 'A panorama of our first week at IB-MYC' and the placeholder text 'My text is pasted here.' Below the text is an image of three people. A red dashed circle highlights a right-click context menu over the image, with options: Cut, Copy, Paste, and Image Properties. A 'Back to Top' link is at the bottom left.

Your image has now been inserted. To go back and bring more adjustments, right-click on the image and select 'Image properties' to have the dialog box open again.

This screenshot shows the same editing interface as the previous one, but with the 'Publish' button in the top toolbar highlighted by a red dashed circle. The main text area now includes a rich text editor with various formatting options (bold, italic, underline, link, etc.) and a 'Format' dropdown. The image of the three people is still present, and a red dashed circle highlights a small red square icon at the bottom right of the image area. The 'Back to Top' link remains at the bottom left.

Continue editing your post. Once it is ready to go, click on 'Publish'.

## Publishing a blog post in IBP Communities

### Other available help pages:

---

[Registering as a member on the IBP Portal](#)

[Joining a Community of Practice](#)

[Adding a publication to the Library](#)

Customizing your email signature in [GMAIL](#) | [OUTLOOK](#)